



شركة بيت التثبيت المحدودة
FIXATION HOUSE CO. LTD.



PRODUCT CATALOG

Fixation House is a manufacturer and distributor of quality fasteners covering a wide range of products, materials, and industries of different sectors for over 20 years.



www.fh-ksa.com

WELCOME

We are dedicated to meeting our customers' needs. Our knowledgeable, experienced sales staff is available to answer any questions customer might have and ensure customer's satisfaction.

We manufacture customized and nonstandard fasteners and operate the highest volume distribution center of nuts and bolts and standard fasteners in the Saudi Arabia.

This diversity provides our customers with a strategic advantage, certified quality, superior service and fast delivery.





CONTENT

03	Hex Bolts
04	Stud Bolts
05	Anchor Bolts
06	Eye & U Bolts
07	Nuts
08	Washers
09	Roofing & Carriage Bolts
10	Threaded Bars
11	Socket Head Bolts
12	Screws
13	Beam Clamp A

HEX BOLT



HEX BOLTS

Hex bolts have hexagonal heads and machine threads for use with a nut or in a tapped hole. Also known as hex cap screws or machine bolts.

- Standard Specification
SS304, SS316, A325, A490
- Grade
8.8, 4.6, 10.9
- Surface Finish
Black, GI, HDG, SS, Brass, Silicon Bronze



STUD BOLTS



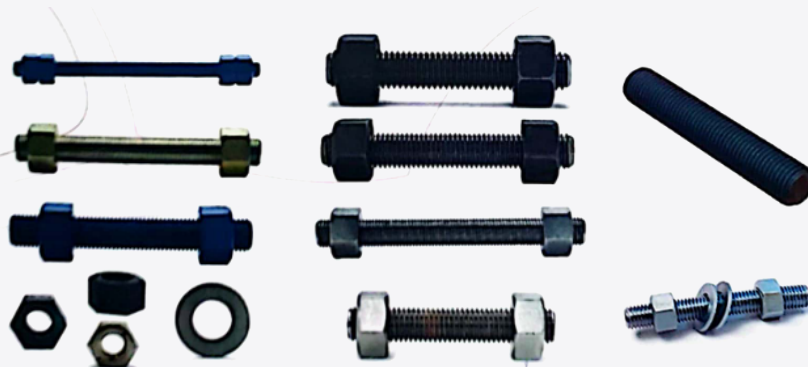
STUD BOLTS

In Petro and chemical industry for flange connections, Stud Bolts and Hex Bolts are used. The Stud Bolt is a threaded rod with 2 heavy hexagon nuts, while the Hex Bolt has a head with one nut. Nuts and heads are both six-sided.

Standard Specification
ASTM A193/A193M and
ASME SA193/SA193M

Grade
B7, B8, 8M, 8.8, 4.6

Surface Finish
Black, GI, HDG, & PTFE (Xylon coated)



ANCHOR BOLTS



ANCHOR BOLTS

Foundation Bolt (L, J & Straight), Wedge Anchor (Through Bolt), Shield Anchor & Drop-in Anchor from 1/4" diameter through 4" diameter in a variety of different configurations and ASTM specifications.

- Standard Specification
 ASTM F1554, ASTM A307,
 A193/A193M, BS7419 etc.
- Grade
 36/55/105, B7, 4.6/8.8/10.9
- Surface Finish
 Black, Zinc Plated, HDG, SS etc.



EYE & U BOLTS



EYE & U BOLTS

Eye Bolts, Lifting Eye Bolts, Eye Bolt Nuts, U Bolts etc.

Standard Specification
BS 3974

Grade
4.6, 304, 316

Surface Finish
Black, GI, HDG, SS etc.



NUTS



NUTS

Heavy Hex Nut, Jam / Thin Nuts, Hex Coupling Nut, Cap Nut, Lock Nut, Flange Nut Pal Nut, Cage Nut, Wing Nut, Spring Nut.

- ⊞ Standard Specification
 DIN 934, ANSI/ASME
 B 18.2.2 1986
- ⊞ Grade
 4.6, 8.8, 10.9, 304, 316
- ⊞ Surface Finish
 Black, GI, HDG, SS, Zinc Plated etc.



WASHERS



WASHERS

Washers are multipurpose fasteners that are vital in a variety of applications. In general, washers have two main functions: to distribute the pressure of the nut evenly over a surface without damage and to ensure that the nut is pressed against a smooth surface to reduce the chances of loosening over time.

- Standard Specification
DIN912, DIN7991
- Grade
8.8, 10.9, 12.9, 304, 316
- Surface Finish
Black, GI, HDG, SS, Brass, Silicon Bronze



ROOFING & CARRIAGE BOLTS



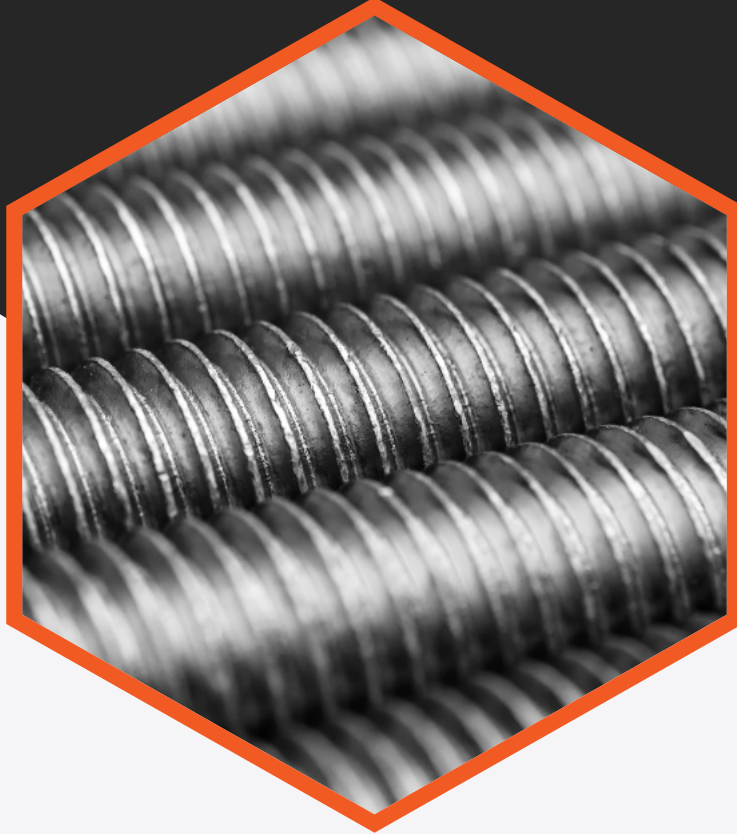
ROOFING & CARRIAGE BOLTS

Double slotted roofing bolt complete With square nut and Carriage bolts have no drive, and machine threads for use with a nut.

- ⊞ Standard Specification
BS 3974
- ⊞ Grade
4.6, 304, 316
- ⊞ Surface Finish
Black, GI, HDG, SS etc.



THREADED BARS



THREADED BARS

Used in plumbing, contracting, and maintenance applications, threaded rods are used to join together and stabilize objects and structures made of wood, metal, and concrete.

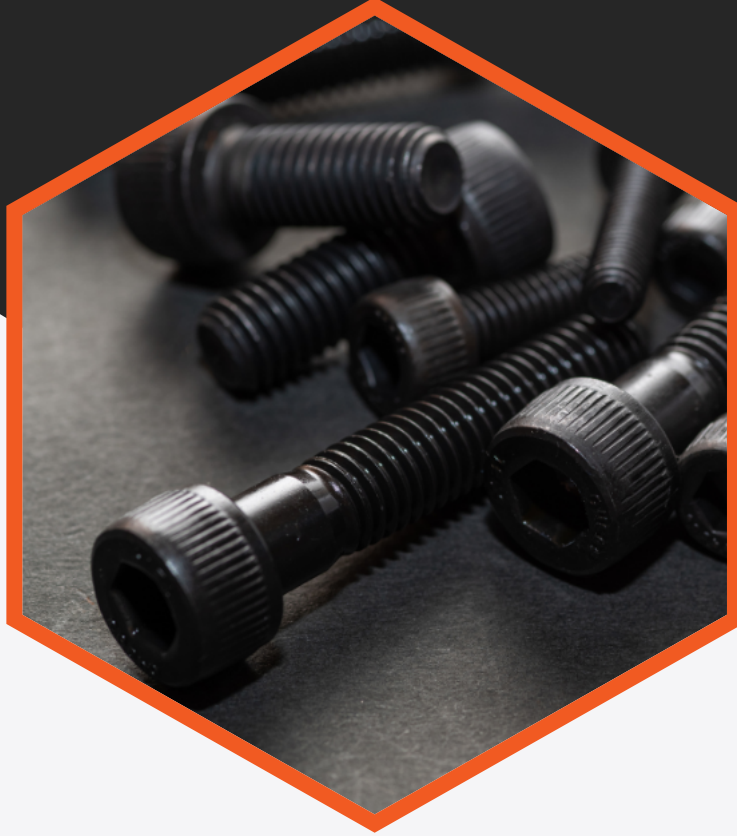
🏠 Standard Specification
DIN 975, ASTM-A193

🏠 Grade
4.6, 8.8, 304, 316, B7, B8, B8M

🏠 Surface Finish
Black, GI, HDG, Brass, SS



SOCKET HEAD BOLTS



SOCKET HEAD BOLTS

Studbolt C/W 2 Heavy Series nuts from 1/4"/M6 dia to 4"/M100 dia.

- ⊞ Standard Specification
DIN912, DIN7991
- ⊞ Grade
8.8, 10.9, 12.9, 304, 316
- ⊞ Surface Finish
Black, GI, HDG, SS, Brass, Silicon Bronze



SCREWS



SCREWS

Self Taping Screws, Drilling Screws, Machine Screws, Drywall Screws.

- Grade
ASME / ANSI, DIN, BS 4.6, 316, 304, 410
- Surface Finish
Black, GI, HDG, SS, Brass etc.

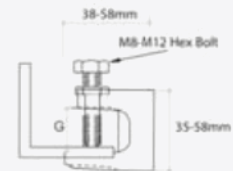
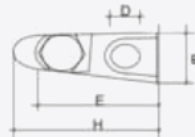
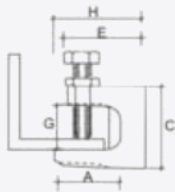


BEAM CLAMP-A

**Material:**

- ⊞ Cast Iron, hot dip galvanized casting tolerance according to DIN 1684- GT All 7.
- ⊞ With hexagon head screw DIN 933 8.8, threaded end with cup point according to EN ISO 4753 and lock-nut DIN 439 .
- ⊞ For sprinkler systems, heating, ventilation and air conditioning, acoustic tubes and sanitary installation machines and steel constructions.

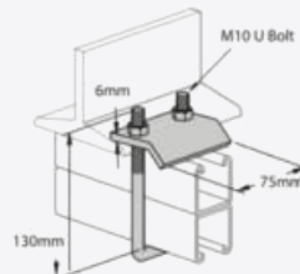
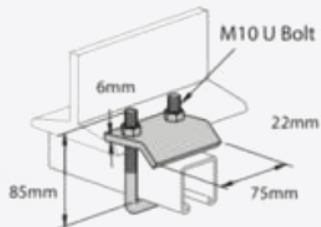
Type	A (mm)	B (mm)	C (mm)	D (mm)	E (mm)	F (mm)	G (mm)	H (mm)	Weight (g)	Safe working load(KN)
BE8	21.0	19.0	35.0	M8	35.0	M8	18.0	38.0	81.0	1.2
BE10	29.0	21.0	35.0	M8	41.0	M10	23.0	50.0	147.0	2.5
BE10a	23.0	21.0	42.0	M10	41.0	M10	20.0	44.0	143.0	2.5
SBC12	35.0	23.5	54.0	M12	48.0	M10	26.0	58.0	216.0	3.5
SBC16	30.0	29.5	58.0	M16	55.5	M12	28.0	58.3	318.0	5.5



- Beam Clamps can generally be secured by safety straps
- Beam Clamps shall be secured when using Beam for pipes larger than DN65 to avoid slipping of beam.

CHANNEL BEAM CLAMP-B

CHANNEL BEAM CLAMP-BB





شركة بيت التثبيت المحدودة
FIXATION HOUSE CO. LTD.



CONTACT INFO.

+966 12 610 4441 ✉ info@fh-ksa.com

CR 4030514118, P.O. Box 24619 Al Baladia St., Sohaili Building 2,
Jeddah 21456, Kingdom of Saudi Arabia

www.fh-ksa.com